



Scanning the markets
for your investments

onemarkets (IRL) Future of Nutrition and Agriculture Fund

Fund managed by onemarkets Italy

ONEMARKETS ITALY FAMILY

onemarkets Italy ICAV¹ is an Irish-registered variable-capital investment vehicle established by Nova Investment Management Limited, the Irish-registered management company formed in 2023 from the partnership between Azimut Holding S.p.A. (Azimut Group) and UniCredit S.p.A.

UniCredit offers onemarkets Italy UCTIS funds, which are investment solutions managed by a team of experts in active management to take advantage of market opportunities and optimise the risk / return profile over time.

The management of the Fund onemarkets (IRL) Future of Nutrition and Agriculture Fund is delegated by Nova Investment Management Limited to Azimut Investments S.A., a wholly owned management company of the Azimut Group based in Luxembourg. Azimut Investments S.A is authorised and supervised by Commission de Surveillance du Secteur Financier (CSSF).

CHARACTERISTICS OF THE ASSET CLASS

- **onemarkets (IRL) Future of Nutrition and Agriculture Fund:** A global equity fund investing in companies involved in the production and / or sale of products and services within the agri-food sector, or in industries closely linked to it.
- **INVESTMENT PROCESS:** The strategy combines an analysis of the key trends shaping the evolution of the agri-food sector with an in-depth assessment of the qualitative and quantitative characteristics of individual companies.
- **MACRO TRENDS:** The Fund seeks to capture major structural trends transforming the agri-food sector – particularly those related to changes in food production and consumption necessary to sustain a continuously growing global population.
- **DIVERSIFICATION:** The portfolio typically holds 35 to 45 companies, diversified both geographically and across the entire agri-food value chain. The Fund maintains a balanced exposure to cyclical and defensive sectors, aiming to reduce sensitivity to the economic cycle, as well as a blend of value stocks (companies considered undervalued relative to fundamentals) and growth stocks (companies with high growth potential).

INVESTMENT STRATEGY OBJECTIVE

- **THEMATIC FOCUS:** The Fund concentrates on three core themes closely linked to global population growth: enhancing agricultural land productivity, producing high-nutritional-value food, ensuring sustainability across the value chain, and reducing food waste
- **PORTFOLIO COMPOSITION:** At least 80% of the portfolio is invested in equities of companies operating in the agri-food sector or related industries, selected based on their future growth potential.
- **VALUE CREATION:** The Fund provides direct exposure to long-term structural themes related to global food consumption, with a strong focus on sustainable development across the entire value chain.
- **FOCUS ON SUSTAINABILITY²:** The Fund promotes environmental and social characteristics in accordance with Article 8 of Regulation (EU) 2019/2088 (Sustainable Finance Disclosure Regulation – SFDR). The investment strategy integrates environmental, social, and governance (ESG) factors, applies exclusion criteria to avoid companies involved in controversial sectors or posing environmental and / or social risks, and incorporates Principal Adverse Impacts (PAIs), with the aim of building a portfolio that is both financially efficient and as sustainable as possible.

¹ICAVs are variable capital investment vehicles under Irish law introduced in 2015, and which fall under UCITS (Undertakings for Collective Investment in Transferable Securities).

²Fund compliant with ESG regulations pursuant to Article 8 of regulation (UE) 2019/2088; An internal ESG rating is calculated based on the principles of MSCI ESG Research. Further information on how the Fund promotes environmental and / or social characteristics is available at www.novainvestment.ie.

Distribution in Greece exclusively via Alpha Bank



ALPHA BANK

Nova Investment Management Limited

onemarkets by  UniCredit

THE FUND MANAGER

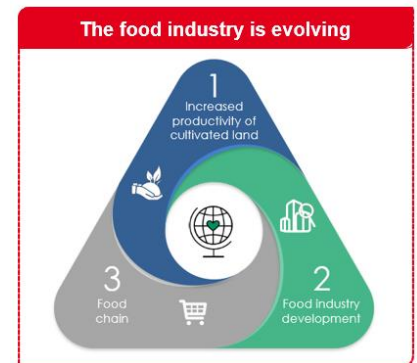


MATTEO PAGELLA

At Azimut since 2020, with focus on thematic equity strategies.
He specialises in global equities, with a bottom-up management approach.

WHAT ARE THE KEY FEATURE OF THE FUND?

- The Management Team is part of Azimut's Global Team, that is part of Azimut's Global Team, comprising over 170 investment professionals. With nearly 30 years of experience in financial markets, the team oversees more than EUR 100 billion in assets as of June 30, 2024, with over half of these assets invested in funds distributed in Italy. The Global Team continuously monitors global financial markets 24/7, leveraging its network of management hubs across Europe, the Asia-Pacific region, the United States, and Latin America.
- Thanks to its long-standing track record in active portfolio management and deep expertise in equity markets, the Investment Team is able to consistently identify and select high-quality companies with strong appreciation potential over time.
- The Fund aims to achieve its investment objective by actively managing a portfolio of equities issued by companies operating globally and involved in the production and / or sale of products and services for the agri-food sector. The strategy places particular emphasis on three key areas of activity essential to supporting global population growth: enhancing agricultural land productivity, producing high-nutritional-value food, ensuring sustainability across the value chain, and reducing food waste.
- The target sectors include: industrial (agricultural machinery), chemical (fertilizers, biochemical ingredients), agricultural commodities (production and processing), food and beverage companies, online and offline food retail, logistics, and packaging.
- Reflecting the Management Team's strong focus on structural themes and sustainability, the Fund integrates Environmental, Social and Governance (ESG) factors in the investment selection process. It applies exclusion criteria to avoid companies operating in controversial and / or unsustainable sectors or activities that could pose reputational and financial risks over the medium to long term³.



HOW IS THE PORTFOLIO BUILT?

- The portfolio is built by selecting companies with a **sustainable competitive advantage** and strong **future growth potential**.
- In addition to a dynamic allocation across the three macro-trends outlined above, the Fund maintains a **diversified exposure across both cyclical sectors** – such as chemicals, industrials, and consumer discretionary, which are more sensitive to the economic cycle – and **defensive sectors**, such as food & beverages, pharmaceuticals, and technology, which tend to be less correlated with macroeconomic conditions.
- The result is a portfolio that aims to be **more resilient during market corrections**.
- ESG factors are also integrated into the process, along with the application of an **exclusion list** and the consideration of **Principal Adverse Impacts (PAIs)**. The Fund is classified as an **Article 8 product** under the SFDR.

HOW DOES THE SELECTION PROCESS WORK?

- The selection process leverages the expertise of the Management Team in equity portfolio construction, with a stock-picking approach that ensures both geographic and sector diversification.
- The starting point is an analysis of the macro-trends driving the evolution of the sector (top-down approach).
- This is followed by a thorough fundamental analysis of individual companies (bottom-up approach), including quantitative elements – such as return on invested capital, financial leverage, and discounted cash flow valuation – and qualitative aspects, such as competitive positioning and management quality. These analyses are conducted internally and further deepened through direct meetings with company management.

PORTFOLIO COMPOSITION

- The Fund invests in 35 to 45 stocks globally, diversified across the agri-food value chain and selected to optimise the portfolio's overall risk-return profile.
- The management team carefully selects the companies in which the Fund invests, excluding those operating in sectors with activities considered **controversial or unsustainable**.
- **Equity exposure represents at least 80%** of the portfolio. The portfolio composition may vary depending on changing market conditions.

³Details on the criteria adopted by the investment manager are available at www.novainvestment.ie

PROFILE OF POTENTIAL INVESTORS

- The Fund is suitable for investors capable of evaluating the risks and potential returns of an investment focused primarily on equities.
- The Fund is suitable for investors with a long-term investment horizon.
- The recommended holding period is **7 years**.
- This Fund is restricted from offering to any “US Person”.

FUND DETAILS AND FEES

| Fund Type | Thematic Equity | |
|---------------------------------|---|--------------|
| Fund Name | onemarkets (IRL) Future of Nutrition and Agriculture Fund | |
| ICAV Manager | Nova Investment Management Limited | |
| Fund Manager | Azimut Investments S.A. | |
| Distribution Company | UniCredit S.p.A. | |
| Investment Classes | G | D |
| ISIN | IE000HAMHDE9 | IE0005JVU1Z1 |
| Dist. / Acc | Accumulating | Accumulating |
| SRI* | 3 – The risk indicator assumes that the fund is held for 7 years | |
| Minimum initial investment | 100 EUR | 100 EUR |
| Base Currency | EUR | EUR |
| Launch Date | 29.02.2026 | 20.02.2026 |
| Entry Costs | 3.5% | 3.50% |
| Exit Costs | 0.00% | 0.00% |
| Management Fees and other Costs | 3.30% | 3.30% |
| Transaction Costs | 0.10% | 0.10% |
| SFDR Classification | Article 8 | |
| Benchmark | The Sub-Fund is actively managed in reference to 75% of the MSCI World Infrastructure Net Total Return Index converted to EUR plus 25% of the Dow Jones Brookfield Global Infrastructure Composite Total Return Index in EUR (the "Benchmark") by virtue of the fact that it seeks to outperform the Benchmark. | |

Last update: 12.11.2025

*SRI – The summary risk indicator is a guide to the level of risk of this product compared to other products. It shows how likely it is that the product will lose money because of movement in the markets or because we are not able to pay you. The lowest category does not imply there is no risk. The SRI may change over time. For further details, please refer to the KID. The Fund does not offer any guarantee on performance or capital preservation.

The Fund does not offer any guarantees on performance or capital. Financial investments involve risks of capital loss. The investment policy of the Fund should be read together with the Prospectus. For more details on the investment policy, please refer to the document containing key information (KID) and the Fund's Prospectus. The data is provided for illustrative purposes and may vary over time without notice, within the limits provided by the Prospectus. For more details on costs / fees and expenses, it is necessary to consult the Prospectus and the KID.

MAIN RISKS AND INFORMATION

- Share prices may experience significant fluctuations as they depend on the overall economic and political environment.
- During periods of market instability, the Fund may be forced to sell assets at a price that does not reflect their intrinsic value.
- Growth securities are subject to higher risks of loss and price volatility and may fail to realise their perceived growth potential.
- Emerging markets are less stable than developed markets and therefore involve higher risks, including market, liquidity, currency, and interest rate risks, as well as a higher degree of volatility.
- The Fund may use derivative instruments, which may not fulfil the commitments made, exposing the compartments to financial losses.
- The Fund's assets may be denominated in currencies other than the Base Currency, generating potential currency exchange risks that affect the final value of the investments.
- Participation in an ICAV involves risks related to fluctuations in the value of shares, linked to market swings of the instruments in which the resources are invested.
- The integration of ESG and sustainability factors into the investment process entails more complex monitoring and engagement activities, which can affect the value of investments and, consequently, the expected returns.

IMPORTANT INFORMATION

THIS IS A MARKETING COMMUNICATION. It is necessary to review the prospectus of onemarkets Italy ICAV (the “ICAV”) and the Key Information Document (“KID”), before making any final investment decision. The ICAV is an Irish open-ended multi-fund, limited liability, segregated liability between sub-funds collective asset management vehicle, registered and licensed by the Central Bank of Ireland (“CBI”) to carry on the business of ICAV under the Irish Collective Asset-management Vehicles Act, 2015 and incorporated as an undertaking for collective investment in transferable securities under the European Communities (Undertakings for Collective Investment in Transferable Securities) Regulations, 2011 (S.I. No. 352 of 2011, as amended). Nova Investment Management Limited is the designated management company for the ICAV and is regulated by the CBI. The information contained herein is confidential, the property of Nova Investment Management Limited, and intended for the exclusive use of the recipient. The material may not be reproduced, distributed or used for any other purpose. The information contained herein is not exhaustive and does not contain specific fundamental notions about the investments described herein, including important information and risk factors associated with such investments, and is also subject to change without notice. Recipients of this document assume full and absolute responsibility for the use of the data, information and opinions contained herein as well as for any investment choices made on the basis thereof. Any use of the document as support for investment transaction choices is at the user's complete risk.

This document is not intended to be, nor should it be construed or used as, an offer to sell or a solicitation of an offer to buy shares in the mentioned fund. If an offer is made, it will be made in accordance with the prospectus and KID, which contains detailed information on the terms of investment and the risks, fees and expenses associated with an investment in the ICAV. Neither the CBI nor any state securities administrator has approved or disapproved, deliberated or endorsed the merits of these securities. In addition, the performance information reported herein was prepared by or on behalf of Nova Investment Management Limited and has not been independently reviewed or verified, except for certain year-end data. Investment returns can vary substantially from stated objectives and/or targets, so investors may experience a gain or loss when redeeming their investment. As with any investment (vehicle), past performance is not indicative of future performance. Forward-looking statements constitute the opinion of Nova Investment Management Limited and do not guarantee any precise results or performance. All investments involve substantial risks. The profitability and performance of investments depend on many factors, which may impact active management of securities, in all global markets. The opinions expressed are only those existing as of the date of publication of this material. The information provided in this material is illustrative and no assurance can be given that future events referred to (including expected or estimated returns or performance results) will occur on the terms contemplated herein or in any event. Although the data contained herein have been prepared on the basis of information that Nova Investment Management Limited believes to be reliable, Nova Investment Management Limited does not guarantee the accuracy or completeness of such information. The managers appointed by Nova Investment Management Limited to manage its portfolios may be subject to future change and it is likely that additional portfolio managers will be appointed in the future. For more information on ICAV, including legal documentation, see www.novainvestments.ie. The website also includes a summary of investor rights and further information on access to collective redress mechanisms.

FURTHER QUESTIONS?

Our team of experts will be happy to assist you:

 Please contact your local Relationship Manager or Service Branch

You can also obtain further information at:

 www.onemarkets.gr